

**AI UKRAINE  
2015**

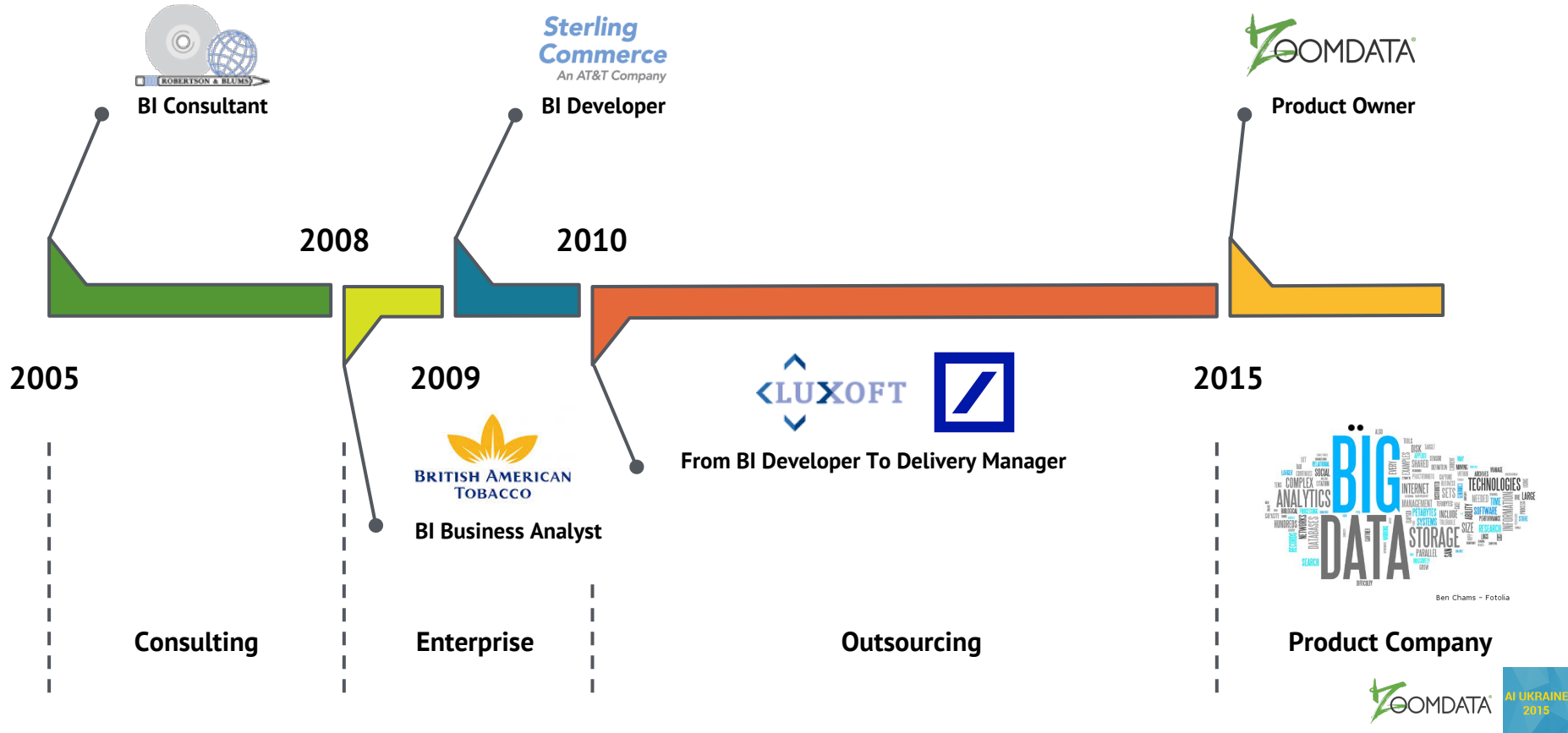
# Big Data Analytic Products - Look Into The Future

Maxim Tereschenko, Product Owner

Kharkiv, 12 September 2015



# About Me



# Agenda

- **Three Disruptive Trends**
- **Zoomdata Company Overview**
- **Zoomdata Architecture**
- **Zoomdata Answers**
- **Demo**
- **Q&A**



# Three disruptive trends



## **Big Data**

Increasing data volume,  
variety and velocity



## **User Expectations**

Business users easily  
access data at internet  
speed and scale

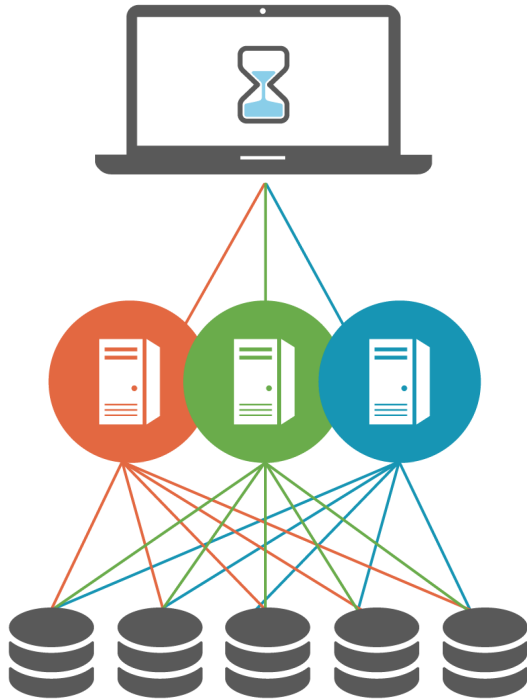


## **Modern Enterprise**

Scale out services  
on commodity hardware  
in the cloud or data center



# Current tools are not ready



## **Hard to use** – designed in an age of specialized skills

- Focus on the “power user”
- Complicated workbench interfaces
- Require SQL coding quickly

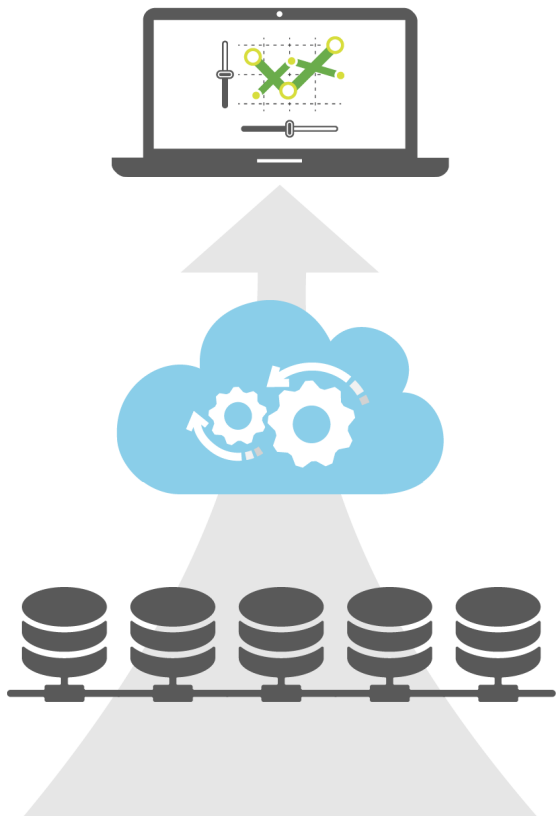
## **Cannot scale** – deployed on desktops or monolithic servers

- Limited user scalability
- Poor performance
- Not built for embedding in other applications

## **Slow performance** – designed for relational databases only

- Loss of functionality
- Poor performance
- Limited data scalability

# Visual analysis requires a new approach



## **Responsive** – interactive, visual & designed for business users

- In-context functionality prompts vs. expert workbooks
- Visually-driven exploration vs coding
- Push-based updates for real-time information

## **Agile** – application architectures are cloud-native

- Designed for multi-tenancy
- Deployment is a choice not a constraint: on-prem, public or private cloud
- Applications components are fully embeddable and extensible

## **Fast** – data processing is parallel & multi-framework

- Purpose-built processing engines have evolved for speed
- Massively parallel processing is the standard for data at scale
- Results are a combination of SQL, search, streaming and machine learning frameworks

# Zoomdata company overview

**Founded:** 2012   **Employees:** 86   **Investments:** 21M \$

**Headquarter:** Reston, USA



# What can you do with Zoomdata?



VISUALIZE



STREAM



CONNECT

cloudera  
HADOOP 2

redshift



Hortonworks



cloudera  
SEARCH



Azure  
Solr



kinesis



MySQL

MAPR



ORACLE

VERTICA

Spark

# How it works



Big Data



Search



Streaming



Cloud Apps



SQL Databases



Flat Files



Custom Sources

## Zoomdata Server

Smart  
Connectors

Security /  
Admin  
Service

Visualization  
Service

Stream Processing Engine

Analytics

*Spark*

Fusion

*Spark*

Result Set Caching

*Spark*



Zoomdata UI

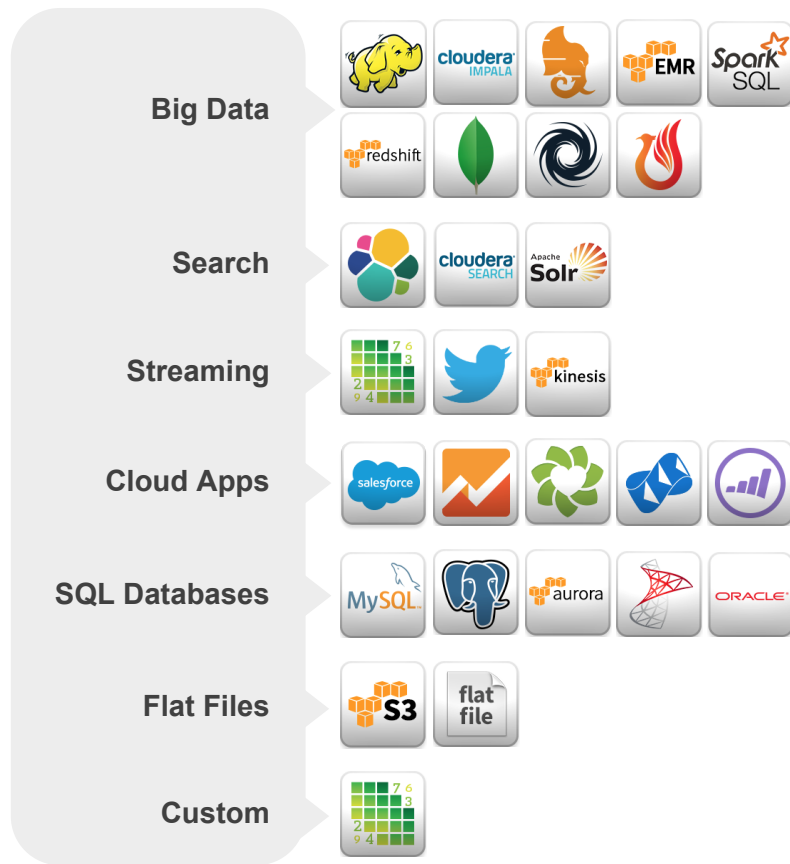


Extensible Zoomdata UI



Custom Applications

# Purpose built for Big Data sources



**Smart Connectors** leverage unique processing in each data framework

- Search facets
- Impala partitions
- Data streams

**Zoomdata Fusion** makes multiple sources appear as one

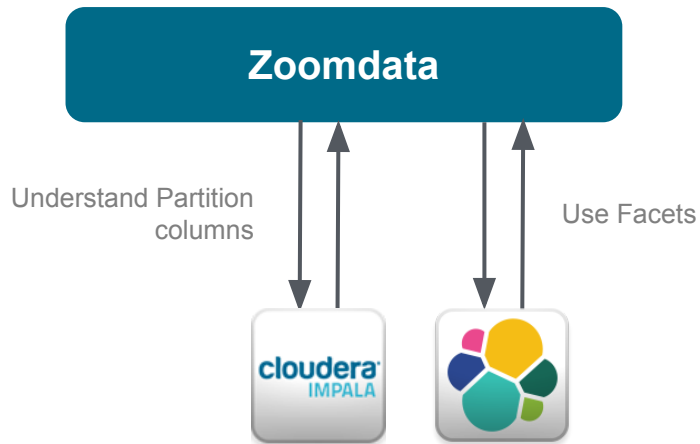
- Data is processed in-place
- Does not require data architect to pre-define
- Leverages scalability of Spark

**Zoomdata Server** takes the query to the data

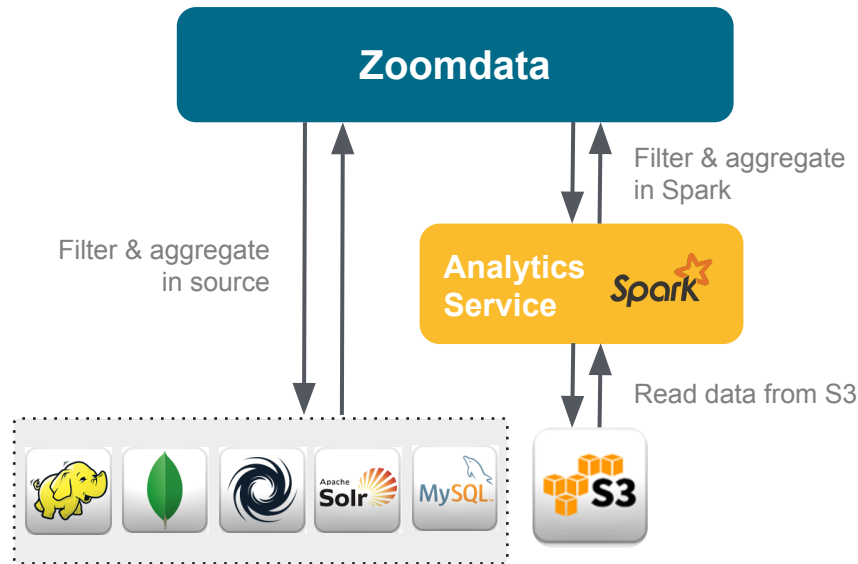
- Data is processed in-place
- Uses patented Micro-Queries
- No pre-built cubes or lenses

# Native Smart Connectors are optimized for Big Data

Use full functionality of native API's  
not available through JDBC/ODBC



Leverage Spark to supplement  
capabilities of the source



# Fusion makes multiple sources appear as one



**Big Data**



**Search**



**Streaming Data**



**Cloud Apps**



**SQL Databases**

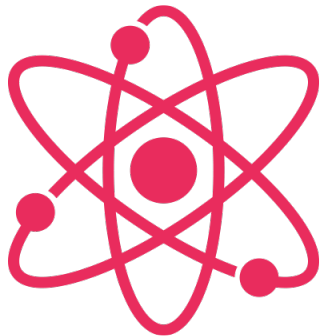


**Flat Files**

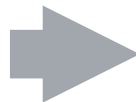


**Custom Sources**

## Zoomdata Fusion



Makes multiple sources  
appear as one  
without moving data



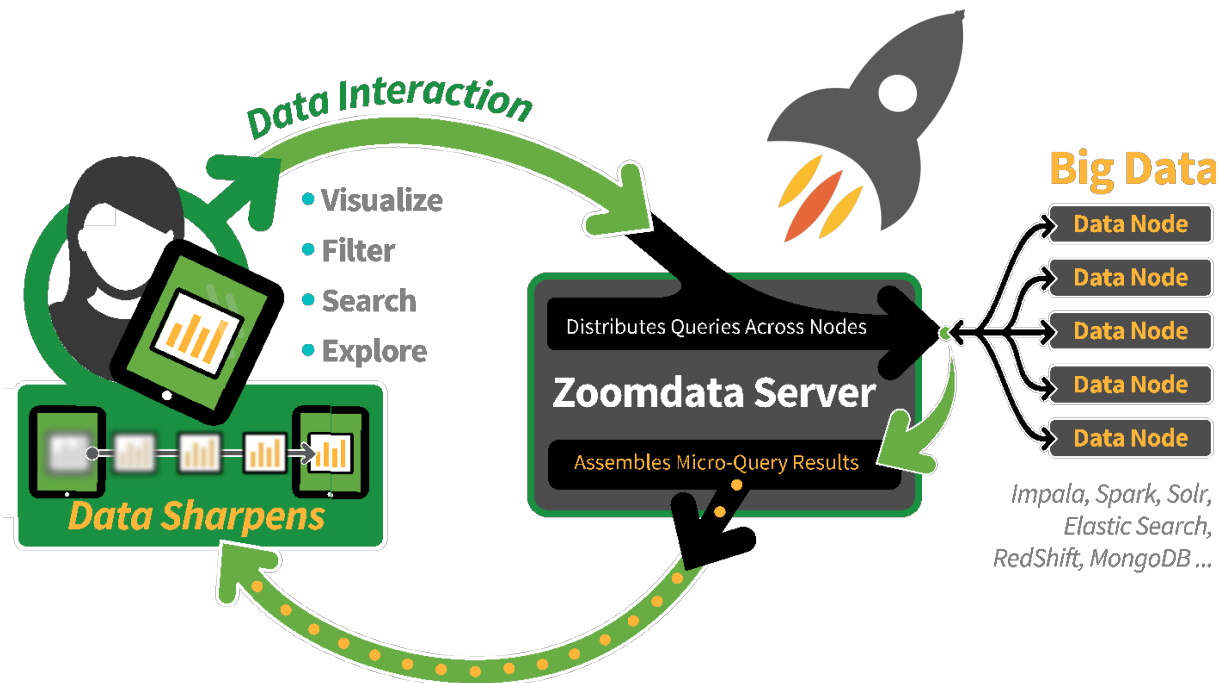
Enrich Big Data with lookup  
information from relational or flat  
file sources

Combine metrics from Big Data  
source with metrics from data  
warehouse or other sources

Correlate real-time data feed with  
historical data



# Process big data sets faster



Zoomdata's **Streaming Architecture** provides the fastest experience for both real-time and historical data

**Data Sharpening** shows results instantly so users can act without waiting

Zoomdata leverages **Spark** and other technologies for high-scale performance

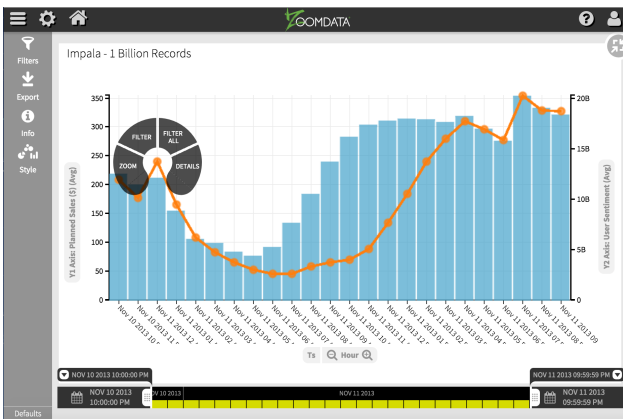
# Built for the Broadest Range of Users



Current BI products are specialized tools for *data experts*  
Zoomdata empowers *any business user* to consume data



Design-First  
User Experience



Invites users  
to interact with data



Responsive design for browser or  
touch screen

# Easy to embed and extend Zoomdata capabilities

Customize UI

Application Title

Page Title

comScore

Help Content

☐ Zoomdata Support Site

☐ URL: <http://yoururlthere.com>

☒ Custom Message

Please contact your comScore account team with any questions or feedback.

Login Page Footer

Zoomdata Copyright and Terms

☐ On ☒ Off

Customize Artwork

Favicon

Header Logo

comSCORE

size/file type: 32px x 32px/.ico

size/file type: max height=72px/.svg or transparent.png

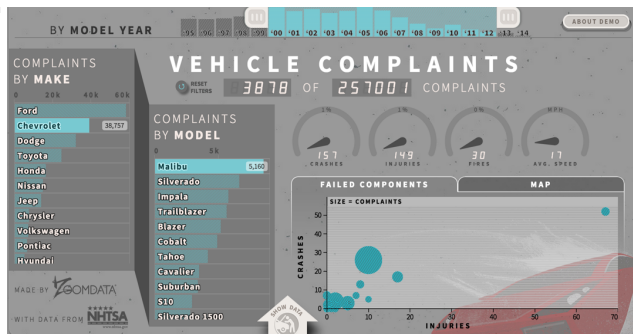
Login Page Logo

comSCORE

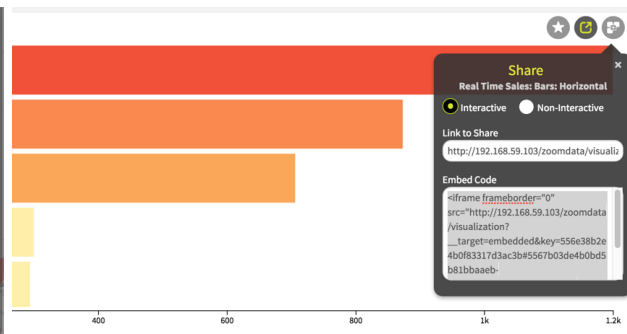
size/file type: 500px x 184px/.svg or .png

Login Page Background Image (full-screen)

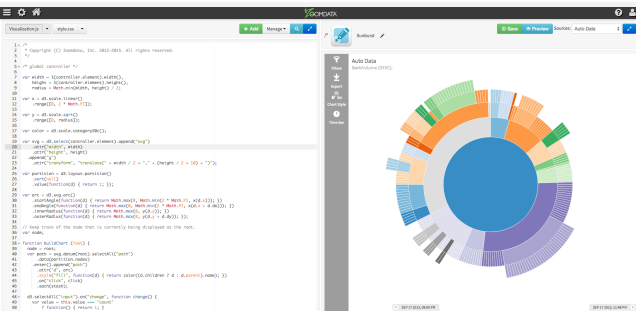
Easy to White-label



Easy to embed in Custom Apps



Easy to Share



Custom Visual Development  
in Visualization Studio



Create Enterprise Connector

Name

HP Vertica

Replace Icon (SVG, PNG, JPG or GIF)

Vertica

Save Cancel

Custom Data Source Connectors

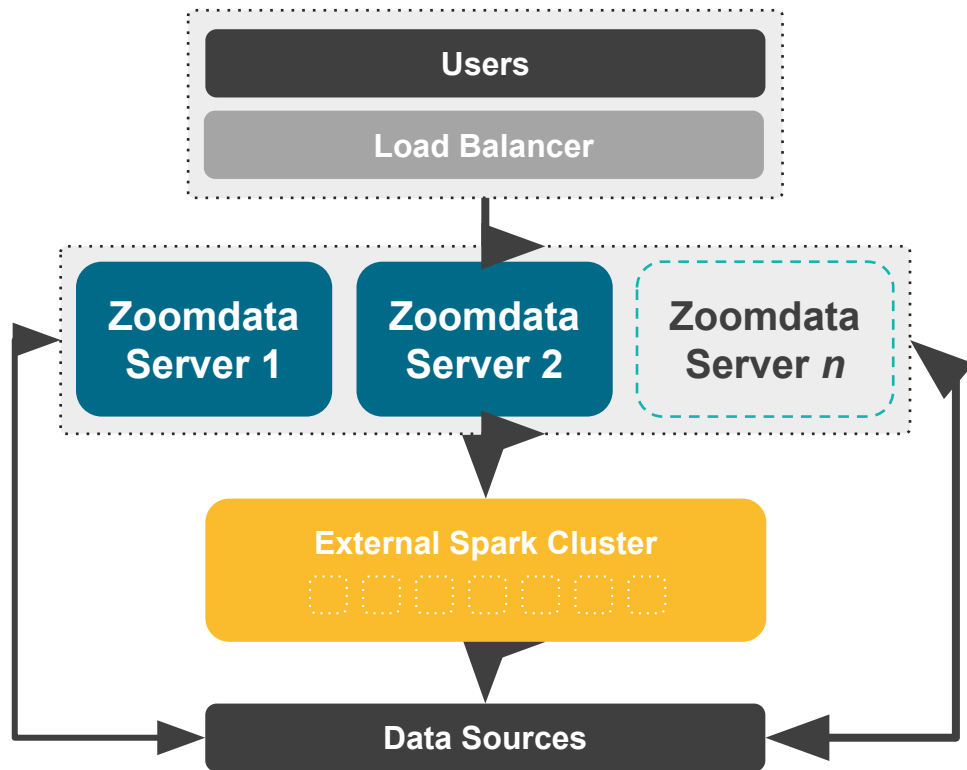
# Built as a modern distributed application

## Modern apps must scale

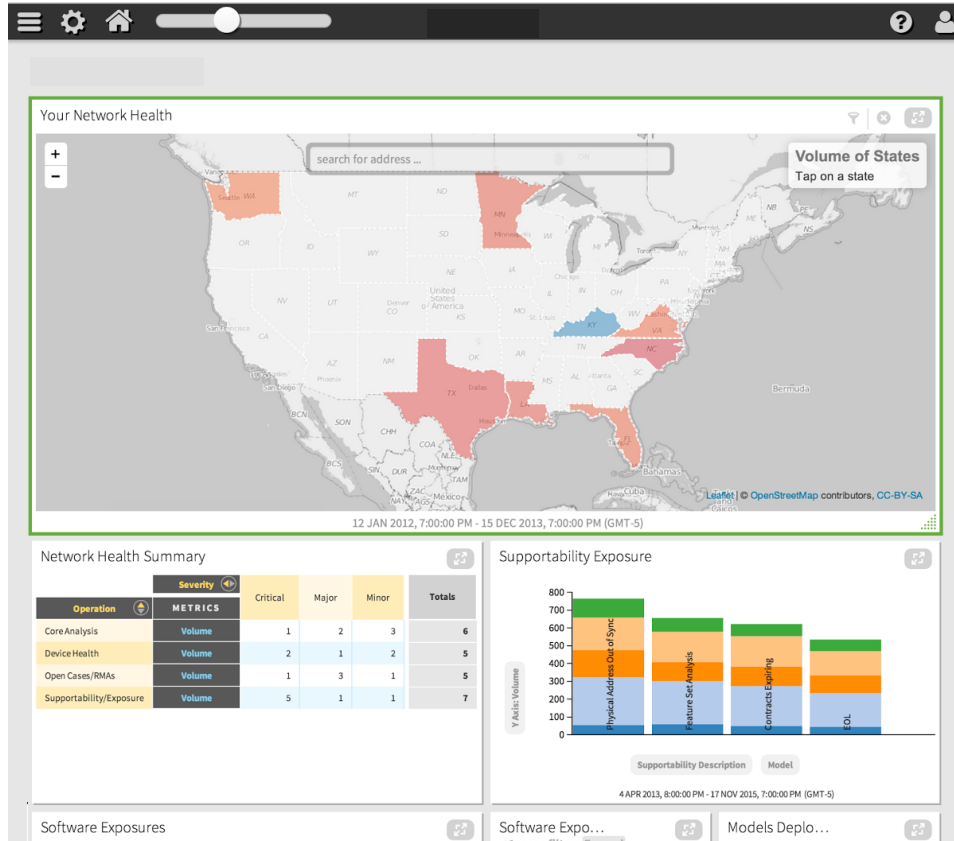
- Scale out on commodity hardware
- Scale for more users and scale for more data independently
- Designed for multi-tenancy

## Modern apps are deployable

- Deploy on-premises or on the cloud
- Package as a container for automated deployment



# Use Case 1 : Visual analytics on Impala for IoT support portal



## A Major Network Devices Company

### Problem:

Monitor thousands of in-field devices through personalized, real-time support portal dashboards.

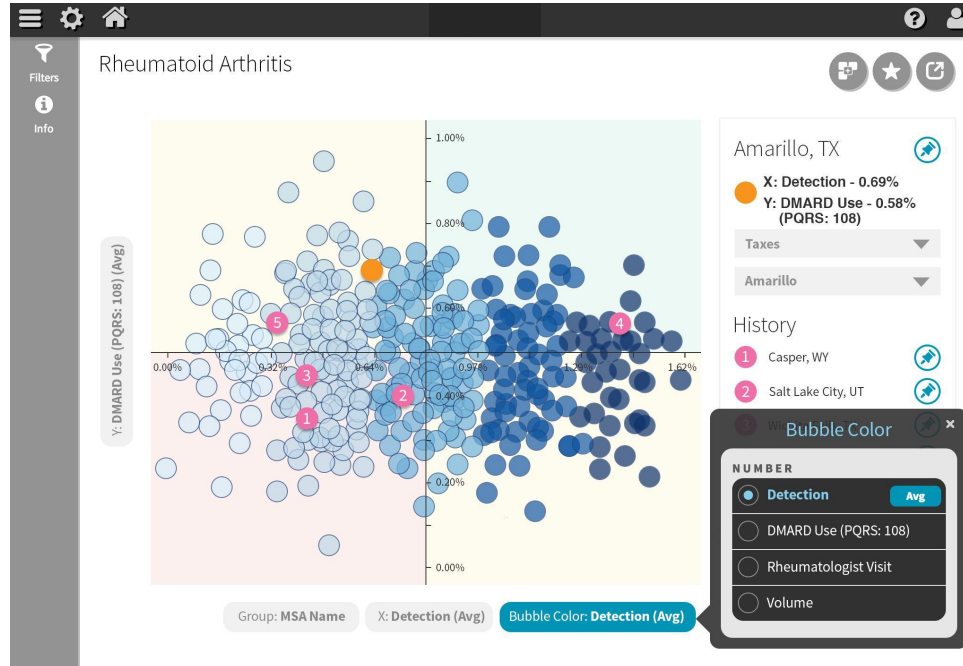
### Solution:

Every support client has access to both an aggregate and detailed view of their devices.

Enables:

- Immediate visibility
- Ability to pinpoint issues at any level of the solution - network, device, or application
- Consistent communication across parties

# Use Case 2 : Identification of healthcare gaps from an iPad



## A Major Pharmaceutical Company

### Problem:

Provide sales executives with a simple way in the field to reveal potential gaps in prescribed therapies. Previously, queries took hours to return.

### Solution:

An interactive iPad application backed by big data analysis that can query 9 billion rows in 6 seconds. Enables:

- Touch-driven navigation of regional insurance claims by hospital region
- Immediate access to statistical clustering
- Increase in evaluation rates of new therapies

The background is a solid green color with a pattern of small, light green circles and dots arranged in a grid-like fashion, fading out towards the right side.

# Demo

# Thank You!

## Any Questions?

### Contact Me



<https://www.linkedin.com/in/maxter>



[maxim.tereschenko@gmail.com](mailto:maxim.tereschenko@gmail.com)



maxterkiev



maxim.tereschenko

### Visit & Try



[www.zoomdata.com](http://www.zoomdata.com)